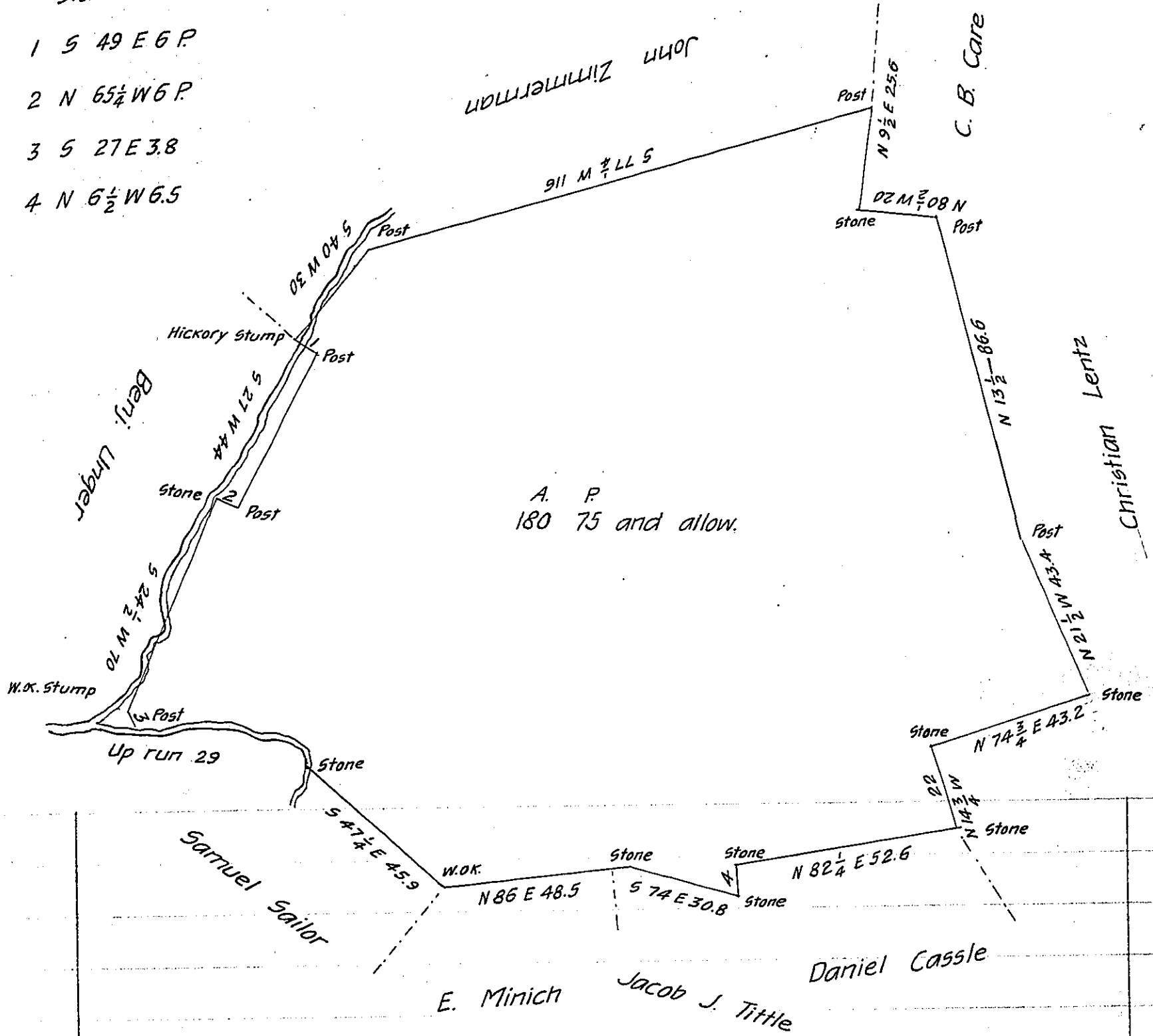


Stations

- 1 S 49 E 6 P
- 2 N 65 1/2 W 6 P
- 3 S 27 E 3.8
- 4 N 6 1/2 W 6.5



Draft of a tract of land Situate in Lower Paxton township
 Dauphin County, Containing one hundred and eighty acres and
 seventy five perches and allowance of Six per Cent, it being part
 of a larger tract which was surveyed for Andrew Caldwell in pur-
 suance of his warrant dated October 4th A. D. 1765. And now
 upon application for a Patent by Daniel B. Conrad Surveyed May
 the 20 A. D. 1864.

To James P. Barr

Per Thomas Strohm.

Surveyor General of Penn.

IN TESTIMONY that the above is a copy of the original remaining on file in
 the Department of Internal Affairs of Pennsylvania, made
 conformably to an Act of Assembly approved the 16th day of
 February, 1833, I have hereunto set my Hand and caused
 the Seal of said Department to be affixed at Harrisburg,
 this twenty-third day of January 1905.

George P. ...
 Secretary of Internal Affairs.